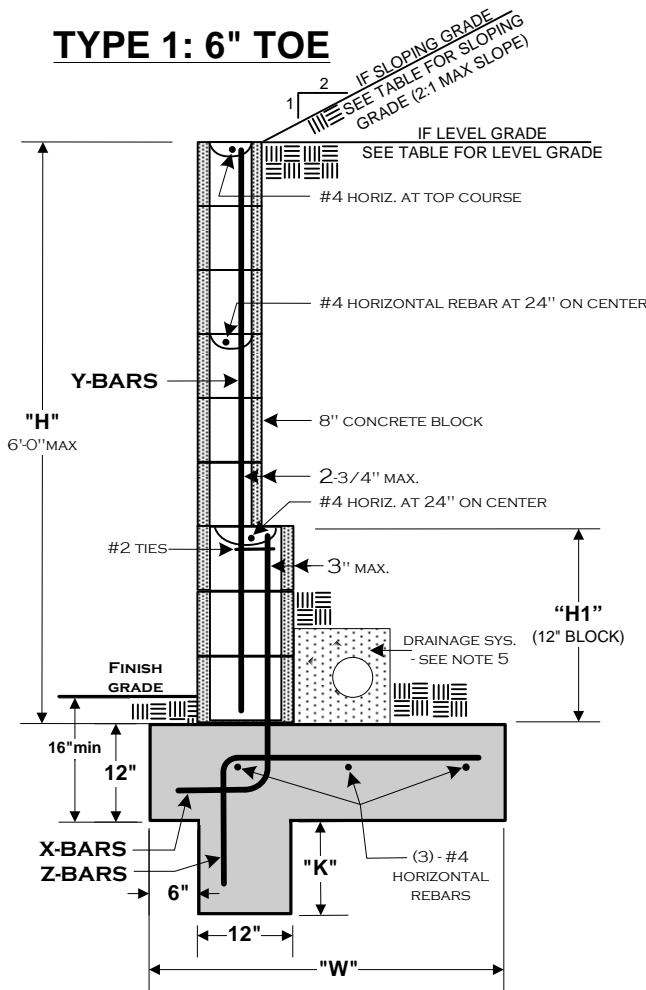
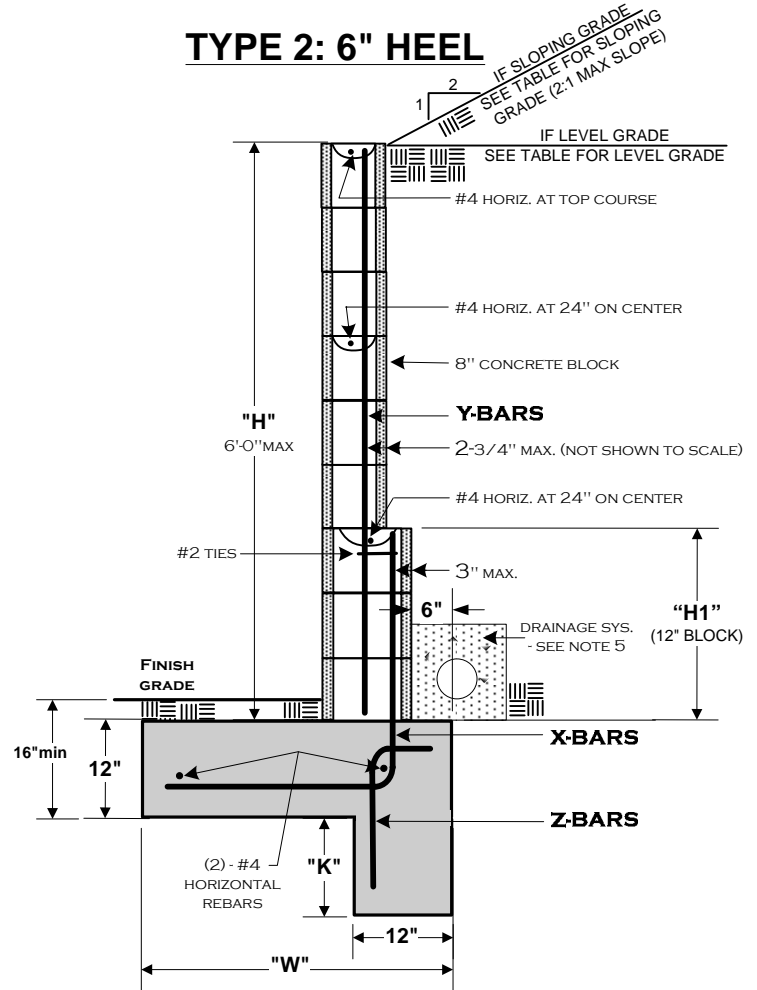


## TYPE 1: 6" TOE



## TYPE 2: 6" HEEL



TYPE 1: 6" TOE							
GRADE CONDITION	"H" (WALL HEIGHT)	"H1" (12" BLOCK)	"W" (FOOTING WIDTH)	X BARS	Y BARS	ZBARS	"K" (KEY WIDTH)
SLOPING GRADE AT TOP OF WALL (2:1 MAX)	5'- 1" to 6'- 0"	24"	69"	#4 @ 16"	#4 @ 32"	#4 @ 11"	30"
	4'- 1" to 5'- 0"	N/R	48"	#4 @ 16"	#4 @ 16"	#4 @ 12"	25"
	3'- 1" to 4'- 0"	N/R	30"	#4 @ 32"	#4 @ 32"	#4 @ 32"	16"
	Up to 3'- 0"	N/R	18"	#4 @ 32"	#4 @ 32"	#4 @ 32"	8"
LEVEL GRADE AT TOP OF WALL	5'- 1" to 6'- 0"	24"	45"	#4 @ 24"	#4 @ 32"	#4 @ 24"	8"
	4'- 1" to 5'- 0"	N/R	36"	#4 @ 24"	#4 @ 24"	#4 @ 24"	7"
	3'- 1" to 4'- 0"	N/R	24"	#4 @ 32"	#4 @ 32"	#4 @ 32"	5"
	Up to 3'- 0"	N/R	21"	#4 @ 32"	#4 @ 32"	#4 @ 32"	N/R

TYPE 2: 6" HEEL							
GRADE CONDITION	"H" (WALL HEIGHT)	"H1" (12" BLOCK)	"W" (FOOTING WIDTH)	X BARS	Y BARS	ZBARS	"K" (KEY WIDTH)
SLOPING GRADE AT TOP OF WALL (2:1 MAX)	5'- 1" to 6'- 0"	24"	39"	#4 @ 16"	#4 @ 32"	#4 @ 12"	28"
	4'- 1" to 5'- 0"	N/R	29"	#4 @ 16"	#4 @ 16"	#4 @ 12"	22"
	3'- 1" to 4'- 0"	N/R	24"	#4 @ 32"	#4 @ 32"	#4 @ 32"	15"
	Up to 3'- 0"	N/R	18"	#4 @ 32"	#4 @ 32"	#4 @ 32"	8"
LEVEL GRADE AT TOP OF WALL	5'- 1" to 6'- 0"	24"	33"	#4 @ 24"	#4 @ 32"	#4 @ 24"	18"
	4'- 1" to 5'- 0"	N/R	26"	#4 @ 24"	#4 @ 24"	#4 @ 24"	13"
	3'- 1" to 4'- 0"	N/R	20"	#4 @ 32"	#4 @ 32"	#4 @ 32"	7"
	Up to 3'- 0"	N/R	20"	#4 @ 32"	#4 @ 32"	#4 @ 32"	N/R

N/R = NOT REQUIRED

\*SEE PAGE 2 FOR ADDITIONAL INFORMATION\*

### DISCLAIMER:

ALTERNATE RETAINING WALL DESIGNS MAY BE POSSIBLE WHEN PROVIDED WITH AN ENGINEERED ANALYSIS. USE OF THIS STANDARD DESIGN IS AT THE USER'S RISK AND CARRIES NO IMPLIED OR INFERRED GUARANTEE AGAINST FAILURE OR DEFECTS.

### WESTERN RIVERSIDE COUNTY CODE UNIFORMITY PROGRAM



## CITY OF TEMECULA BUILDING DEPARTMENT

### RETAINING WALLS

(951) 694-6439

43200 BUSINESS PARK DR.  
TEMECULA, CA 92590

FAX (951) 694-6403

08/1C/2007

TEMRETWALL.FNLB.VSD

PAGE 1 OF 2