



**City of Temecula**  
**BUILDING & SAFETY DEPARTMENT**

43200 Business Park Drive – P.O. Box 9033

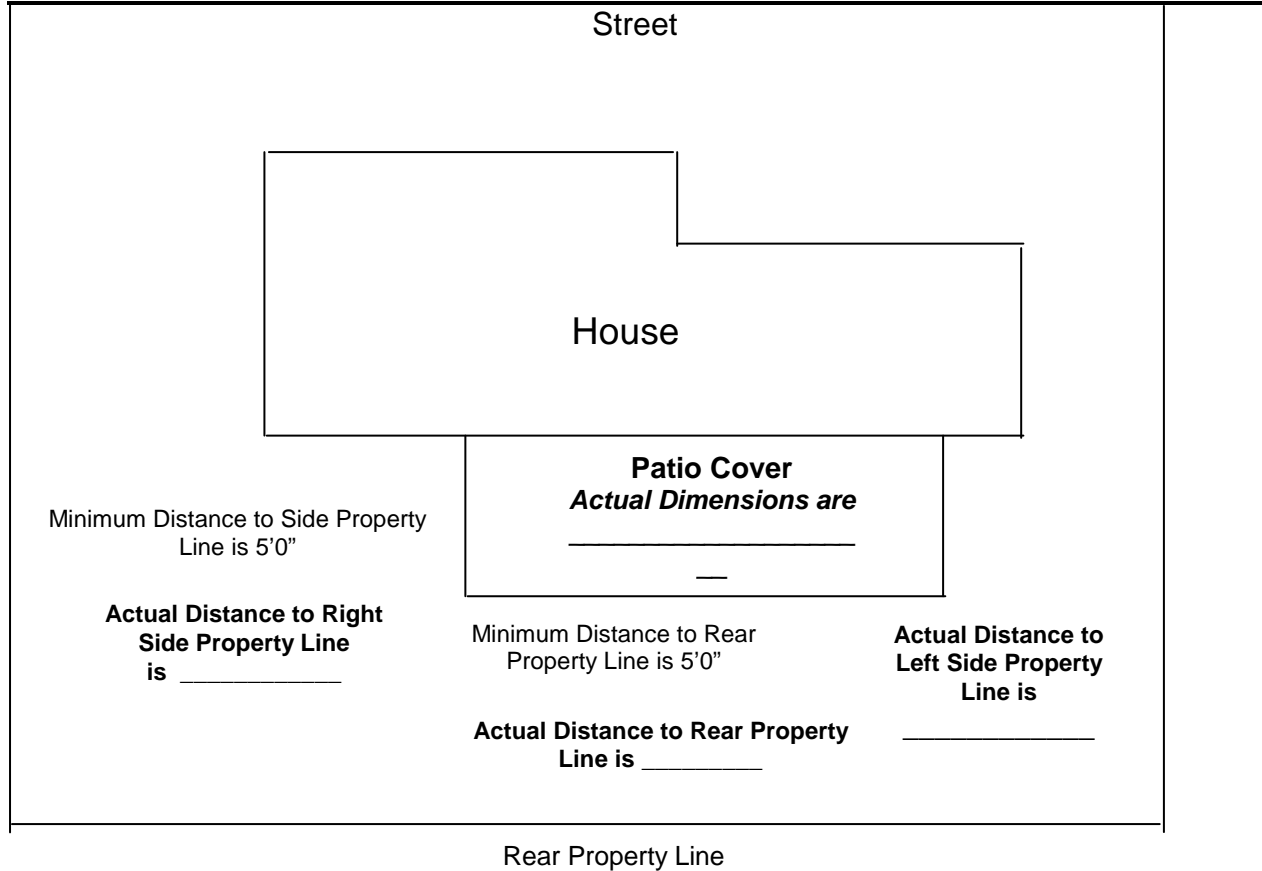
Temecula, CA 92589-9033

Phone: (951) 694-6439 – Fax (951) 694-6478

[www.cityoftemecula.org](http://www.cityoftemecula.org)

# Residential Patio Cover

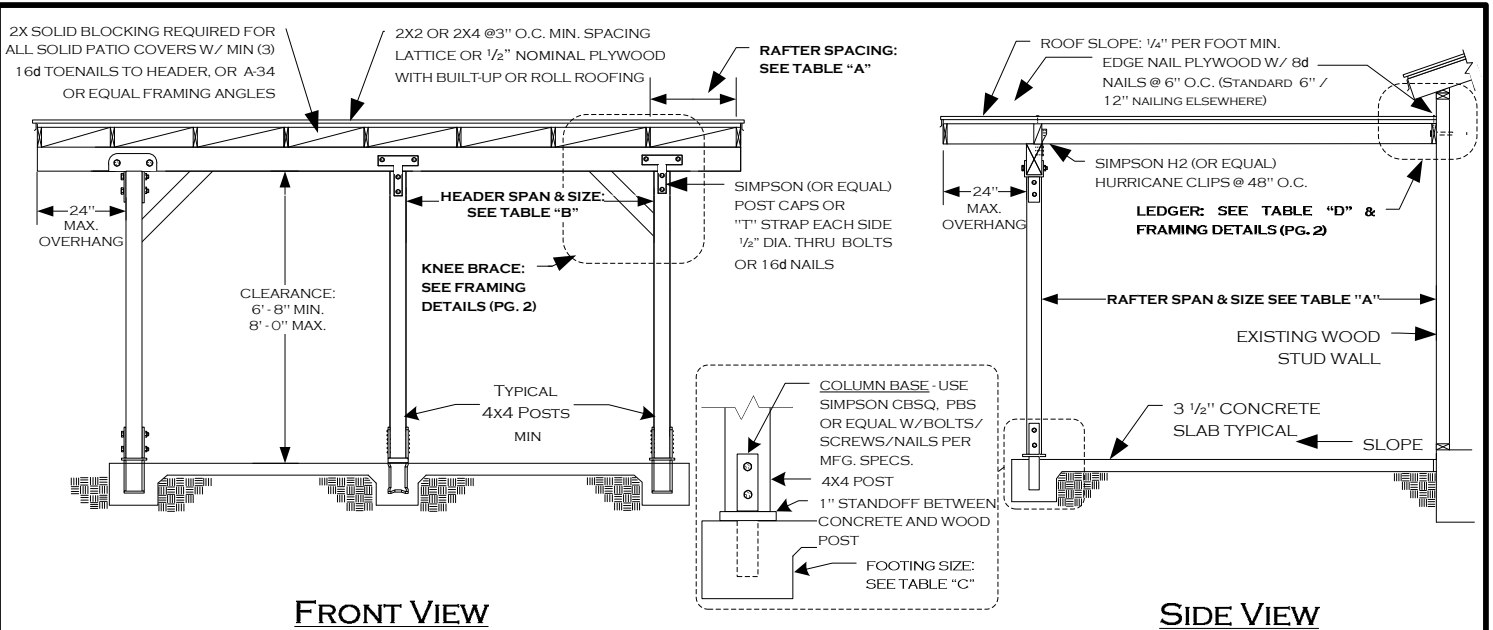
# Plot Plan



**Please note Side and Rear Yard Setbacks on the Plot Plan.  
Please note actual dimensions for the Patio Cover on the Plan.**

## General Notes

1. Front yard setbacks are variable.
2. Side yard setback to any patio post is five (5) feet.
3. Rear yard setback to any patio post is five (5) feet.
4. Eaves shall not extend beyond one-third the distance to the property line. For example, a five (5) foot setback would permit for a twenty (20") inch eave.



**FRONT VIEW**


**SIDE VIEW**

<b>TABLE "A"</b> RAFTER SPANS (DOUGLAS FIR #2 OR BETTER)			<b>TABLE "B"</b> HEADER SIZE & SPANS (DOUGLAS FIR #2 OR BETTER)			<b>TABLE "C"</b> FOOTING SIZE		<b>TABLE "D"</b> LEDGER BOLTING $\Delta$
SIZE	SPACING	SPAN	RAFTER SPAN	HEADER		BASED ON 1000 P.S.F. SOIL BEARING PRESSURE.		ALL LAG BOLTS SHALL HAVE 1/4" PRE-DRILLED HOLES - (SEE NOTE 2)
				SPAN	SIZE			
2 x 4	12" O.C.	9' - 10"	UP TO 12'-0"	8'-0" MAX	4 x 6	18" SQ. X 12" DEEP	18" SQ. X 12" DEEP	1/2" DIA. X 5" LONG AT 16" O.C. STAGGERED
	16" O.C.	8' - 11"		10'-0" MAX	4 x 8	18" SQ. X 12" DEEP		
	24" O.C.	7' - 8"		12'-0" MAX	4 x 10	18" SQ. X 12" DEEP		
	32" O.C.	*6' - 3"		14'-0" MAX	4 x 12	18" SQ. X 12" DEEP		
2 x 6	12" O.C.	15' - 4"	12'-1" TO 20'-0"	8'-0" MAX	4 x 8	24" SQ. X 12" DEEP	24" SQ. X 12" DEEP	(2) 3/8" DIA X 5" LONG AT 16" O.C.
	16" O.C.	13' - 9"		10'-0" MAX	4 x 10	24" SQ. X 12" DEEP		
	24" O.C.	11' - 3"		12'-0" MAX	4 x 12	24" SQ. X 12" DEEP		
	32" O.C.	*9' - 7"		14'-0" MAX	4 x 14	24" SQ. X 12" DEEP		
2 x 8	12" O.C.	20' - 0"	<b>NOTES:</b> 1. TWO 2X MEMBERS MAY BE SUBSTITUTED FOR ONE 4X HORIZONTAL FRAMING MEMBER. 2. LAG BOLTS MUST FULLY ENGAGE A WOOD STUD OR RIM JOIST AND BE PROVIDED WITH APPROPRIATE WASHERS. LAG BOLTS SHALL BE LOCATED A MINIMUM OF 1-1/2" FROM THE TOP OR BOTTOM OF THE LEDGER. 3. NOT DESIGNED TO BE ENCLOSED - ADDITIONAL ENGINEERING ANALYSIS WILL BE REQUIRED IF ENCLOSED. 4. SEE PAGE 2 OF 2 FOR CONSTRUCTION DETAILS.					
	16" O.C.	18' - 2"						
	24" O.C.	14' - 10"						
	32" O.C.	*12' - 8"						
2 x 10	12" O.C.	20' - 0"						
	16" O.C.	20' - 0"						
	24" O.C.	18' - 11"						
	32" O.C.	*16' - 2"						
4 x 4	24" O.C.	10' - 0"						
	32" O.C.	*9' - 3"						
	48" O.C.	*7' - 8"						
4 x 6	24" O.C.	15' - 11"						
	32" O.C.	*13' - 9"						
	48" O.C.	*11' - 3"						
4 x 8	24" O.C.	20' - 0"						
	32" O.C.	*18' - 2"						
	48" O.C.	*14' - 10"						

\* THIS SPACING AND SPAN IS FOR LATTICE PATIO COVERINGS ONLY.

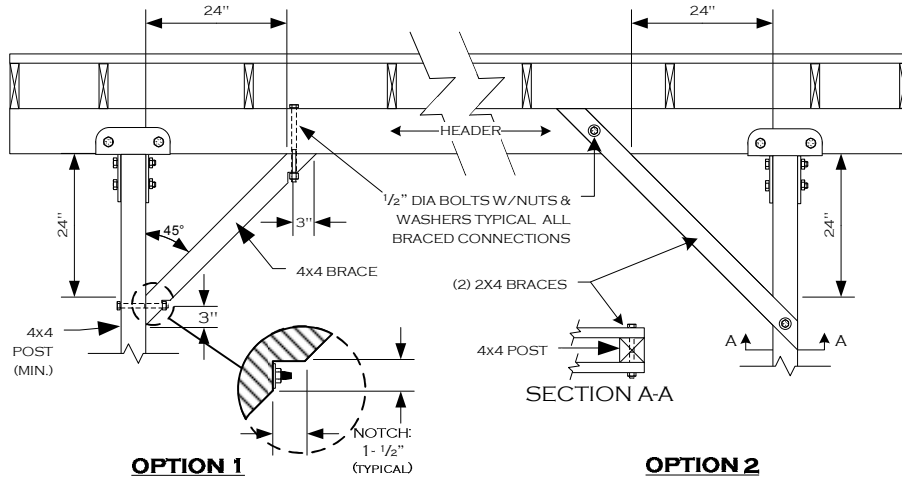
**DISCLAIMER:**

ALTERNATE PATIO DESIGNS MAY BE POSSIBLE WHEN PROVIDED WITH AN ENGINEERED ANALYSIS. USE OF THIS CONVENTIONAL STANDARD DESIGN IS AT THE USER'S RISK AND CARRIES NO IMPLIED OR INFERRED GUARANTEE AGAINST FAILURE OR DEFECTS.

WESTERN RIVERSIDE COUNTY CODE UNIFORMITY PROGRAM			
	<b>CITY OF TEMECULA</b> <b>BUILDING DEPARTMENT</b>		
	<b>PATIO COVER STANDARD</b>		
951-694-6439	43200 BUSINESS PARK DR. TEMECULA, CA 92590		
FAX 951-694-6403	1/1/2008 $\Delta$	PATIOStd2008.VSD	PAGE 1 OF 2

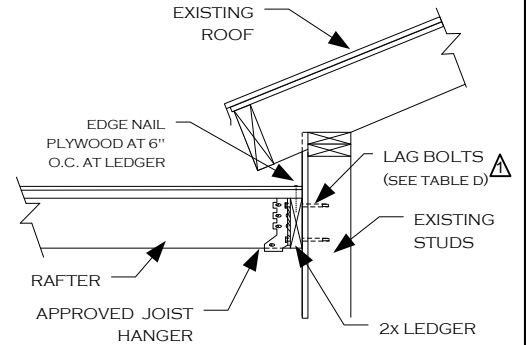
## KNEE BRACE DETAIL AT END POSTS

(REQUIRED WHEN RAFTER SPAN EXCEEDS 12 FT.)



## LEDGER ATTACHMENT

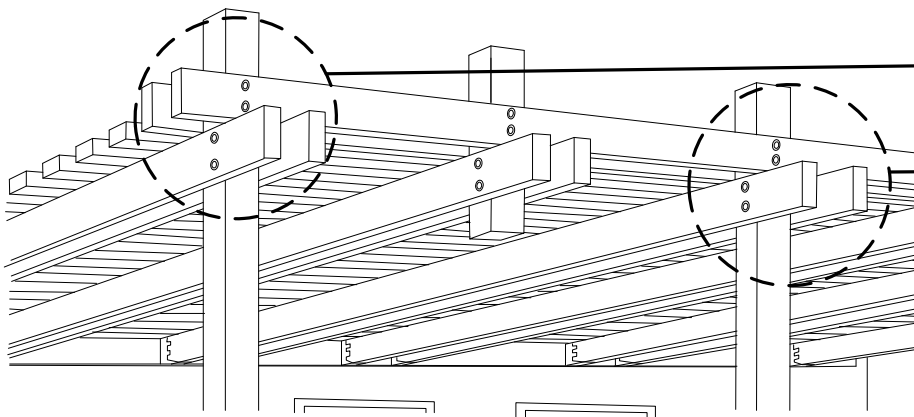
### DETAIL



#### NOTES:

1. USE A CONTINUOUS 2X LEDGER – SAME DEPTH AS RAFTER OR LARGER
2. SEE TABLE "D" FOR BOLTING REQUIREMENTS

## INVERTED HEADER DESIGN OPTION (LATTICE ONLY)



TWO 1/2" DIA. THRU-BOLTS (W/ WASHERS), PER CONNECTION AS SHOWN

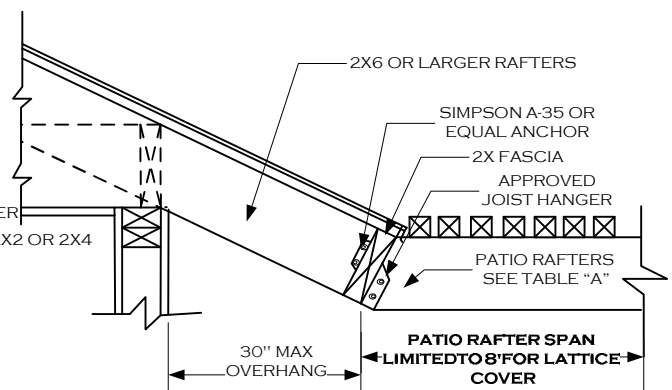
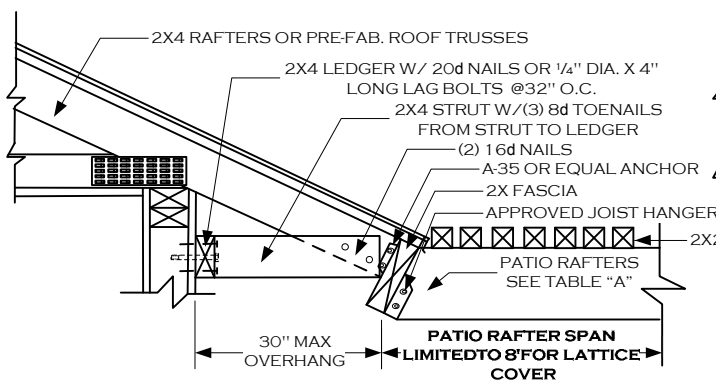
FOR HEADERS OR RAFTERS- TWO 2X MEMBERS MAY BE SUBSTITUTED FOR ONE 4X MEMBER. SEE TABLES "A" & "B" FOR SPAN LIMITS

**NOTE:** KNEE BRACING REQUIRED WHEN RAFTER SPAN EXCEEDS 12 FEET

## 2X FASCIA (OVERHANG) ATTACHMENT – LATTICE ONLY

### OPTION 1

### OPTION 2



**NOTE:** VERIFY STRUCTURAL SOUNDNESS OF ROOF RAFTERS FOR DECAY OR TERMITE DAMAGE, AND REPLACE WITH LIKE MATERIALS AS NEEDED, AFTER CONSULTATION WITH THE BUILDING DEPARTMENT.

### WESTERN RIVERSIDE COUNTY CODE UNIFORMITY PROGRAM



## CITY OF TEMECULA

## BUILDING DEPARTMENT

## PATIO COVER STANDARD

951-694-6439

Fax 951-694-6403

43200 BUSINESS PARK DR.  
TEMECULA, CA 92590

1/1/2008

PATIOStd2008.VSD

PAGE 2 OF 2